



www.Zricks.com



bed room
12'-0"x10'-0"

bed room
12'-0"x10'-0"

W.C.
8'-6"x4'-0"

ZRICKS³

dining
15'-5"x9'-3"

toil
4'-2"x
9'-4"

living
10'-1"x5'-3"

3'-6" wide ver.

kit
x5'-0"

www.zricks.com



ZRICKS.COM

www.Zricks.com

- **Structure** : RCC framed construction.
- **Internal walls** : Cement plastering overlaid with smooth, impervious Plaster-of-Paris/Putty.
- **Doors** : Wooden door frame with 32mm thick flush door.
- **Windows** : Sliding Aluminum windows with large panes.
- **Flooring** : Vitrified tile flooring in all bedrooms, living/dinning room and common areas.
- **Kitchen** : Floor vitrified/ceramic tiles, counter tops granite with steel sink, dados ceramic tiles up to a height of 2feet from the granite top.
- **Toilet** : Floor ceramic tile flooring, dados ceramic tiles up to a 6feet.
- **Sanitary ware** : White, high quality porcelain fittings. Chromium plated fittings of Jaquar or equivalent. Geyser points in all bathrooms and one washing machine point in balcony.
- **Electrical** : Superior quality concealed wiring with the modular switches and miniature circuit breakers, and TV socket.
- **Exterior** : Latest weather proof non-fading exterior finish.



J e s s o r e R o a d

Airport Hotel

Green Valley

Airport

Bus Route No. 91

Green Woods Premium

SBI Bank

Green Park

GREEN RESIDENCY

Kaikhali Road

Green Woods

Club Town

Mega City Approach Road

Haldirams

ZRICKS.COM

Teghoria



Lokenath Temple

LOHARUKA NIKET

R O D V I P

Rajarhat Road

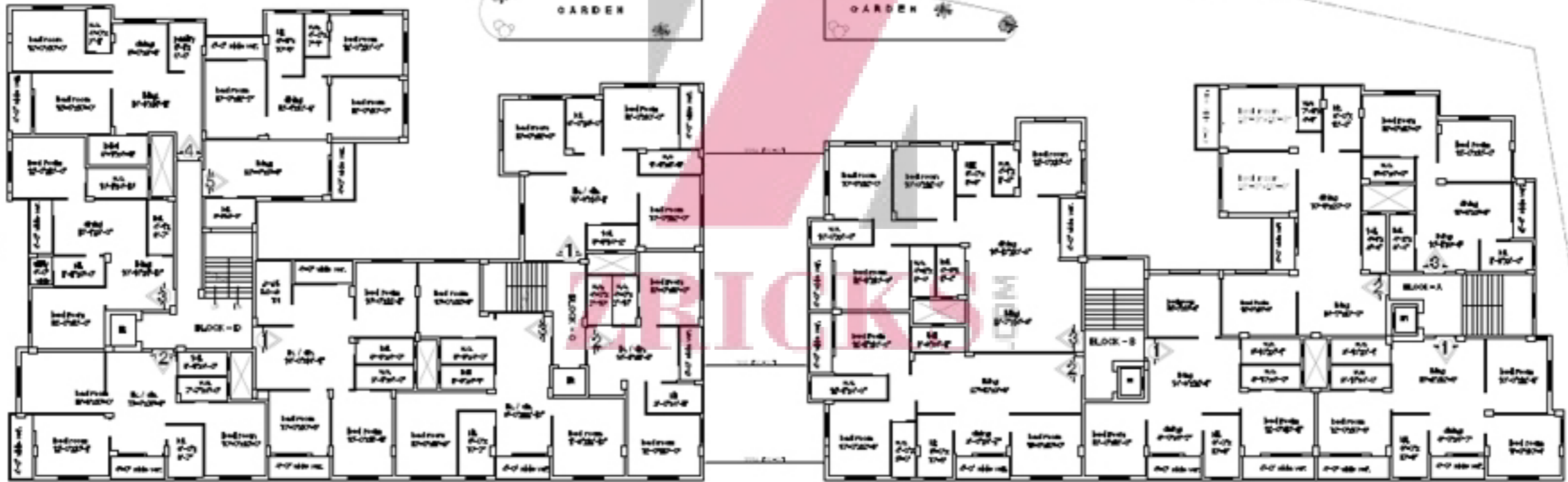
Joramandir

Baguiati

TYPICAL FLOOR PLAN



4570 M. WIDE ROAD



TO BABLATALA

ROAD WITHIN LAND OF AIRPORT
91 C BUS ROUTE

TO V.I.P. ROAD